

# Chippewa County Health Department Annual Report

2022





### **Message from the Health Officer:**

On behalf of the Chippewa County Board of Commissioners and Chippewa County Health Department staff, it is my pleasure to present the 2022 Annual Report for the Chippewa County Health Department. As life started to return to normal in 2022, CCHD staff continued to address Covid-19 by monitoring cases, providing Covid-19 vaccines to the public and assisting residents and business owners with information on safely resuming activities.

CCHD employees eagerly began to return to regular service delivery in all program areas; it is an honor to work with dedicated staff that is truly committed to provide quality services to Chippewa County residents. Public health and home health staff touch the lives of nearly every resident within Chippewa County through a variety of mandated and allowable programs. These services ensure a safe community for all.

I hope you enjoy this annual report of services delivered in 2022 by the committed staff of CCHD.

Karen Senkus, Health Officer

## Index

Letter from Health Officer	2
Index	3
Mission Statement	4
Administration	5
Organizational Structure	6
Emergency Preparedness	7
Environmental Health	8
Home Health and Hospice	9
Personal and Family Health	10
Substance Use Disorder Prevention	11
Community Programs	12
School-Based Health	13
Communicable Disease	14
Financials	16

For more information on our programs, or to sign up for services, please visit our website,

[www.chippewahd.com](http://www.chippewahd.com)

or

Follow us on Facebook  
(Chippewa County Health Department)

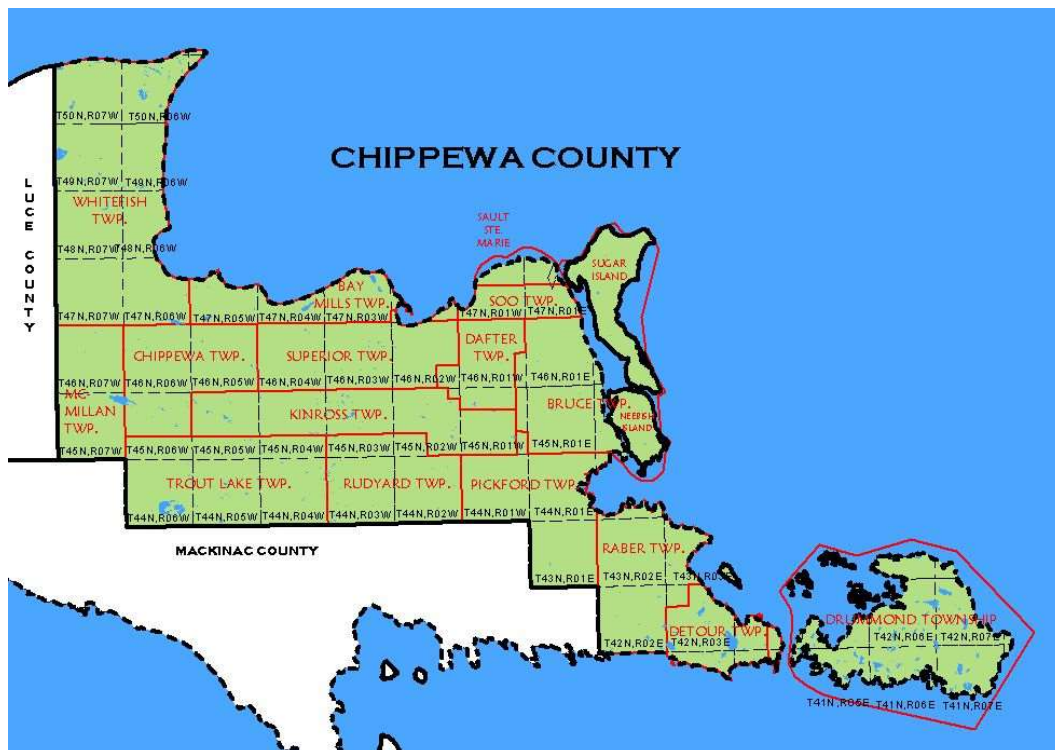
or

Instagram  
(@chippewacountyhdpublichealth)

## Mission Statement

To contribute to the present and future health of persons residing, visiting or working in our service areas by direct provision of services; by facilitating the delivery of services provided by others; and by monitoring and regulating activities that may have an impact on the health of these communities.

Chippewa County presents unique challenges to those who serve the members of the community. Chippewa County encompasses 2,698 square miles which includes several islands. The population is 36,785 as of the 2020 Census. Our average snowfall is 101 inches per year. Through education, prevention and the provision of services, staff of the Chippewa County Health Department strive to overcome these obstacles and care for every member of the community.



# **Administration**

## **Chippewa County Board of Commissioners**

Jim Martin, Chair  
Scott Shackleton  
Robert Savoie  
Damon Lieurance  
James Traynor

## **Chippewa County Administration**

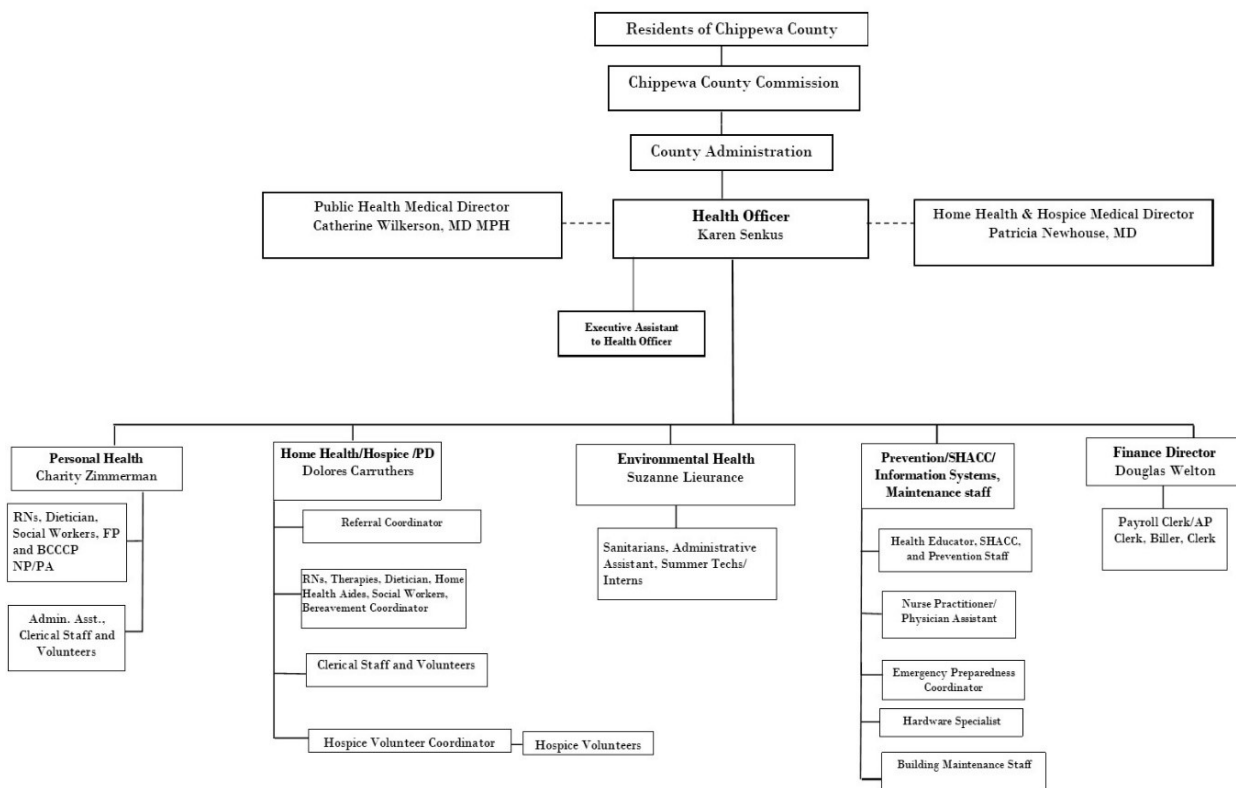
Kelly Church, County Administrator  
Cady Bauers, Administrative Assistant

## **Chippewa County Health Department Administrative Staff**

Karen Senkus, Health Officer  
Dr. Catherine Wilkerson, Medical Director  
DJ Welton, Finance Director  
Dolores Carruthers, Home Health & Hospice Supervisor  
Suzanne Lieurance, Environmental Health Supervisor  
Charity Zimmerman, Personal & Family Health Supervisor  
Jill Schaefer, Executive Assistant

# Organizational Structure

## CHIPPEWA COUNTY HEALTH DEPARTMENT



# Emergency Preparedness

CCHD's Emergency Preparedness Coordinator (EPC) covers many areas on a "regular" basis, but this past year still saw many activities related to the COVID-19 virus and response. In addition, there was a concern of the new Monkey Pox, or Mpox virus. Coordination between CCHD, regional health departments and other partnering agencies expanded to cover this occurrence. The EPC managed logistics and CCHD's ICS COVID-19 response, coordinated COVID testing activities conducted with state testing teams, conducted KN95 mask and home test-kit distribution for the public and drafted the After-Action Report for CCHD's COVID-19 response.

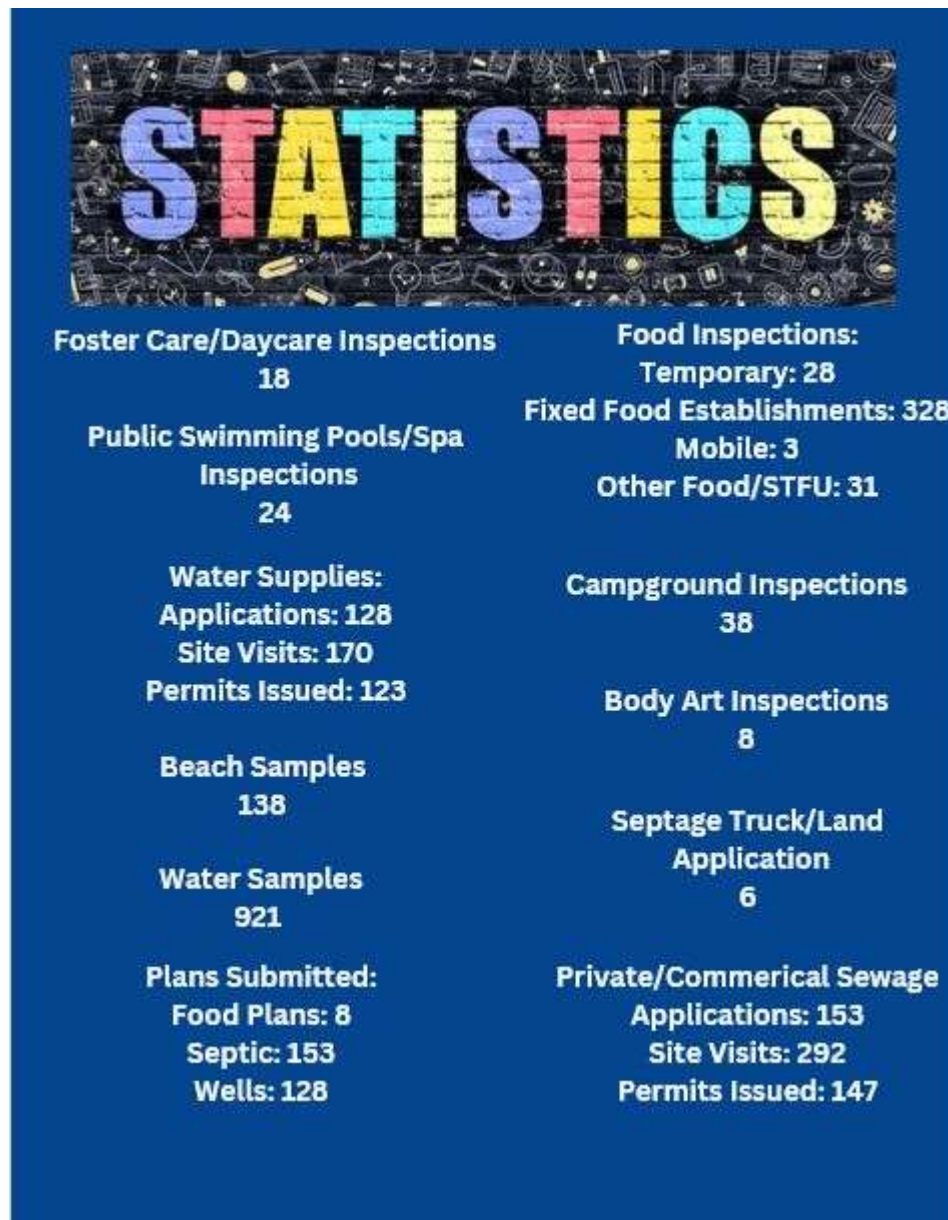
In addition, the EPC updated CCHD's safety and emergency response plans; conducted Fit Testing for CCHD staff (30 staff members) and assisted with the Algoma Steel Oil Spill Response.

The Rural & Ready Symposium is an annual conference coordinated by the EPC in partnership with several community organizations. It was held in-person this year and 100 attendees from across Michigan, Wisconsin and Ontario were in attendance.



# Environmental Health

From food to water and everything in between, the Environmental Health division is an integral part of keeping Chippewa County residents healthy. CCHD's dedicated team of professionals conduct a variety of inspections, including septic systems, wells, food facilities, public pools, body art facilities and beaches. Staff also answer questions and handle complaints from the public, provide education to the community.



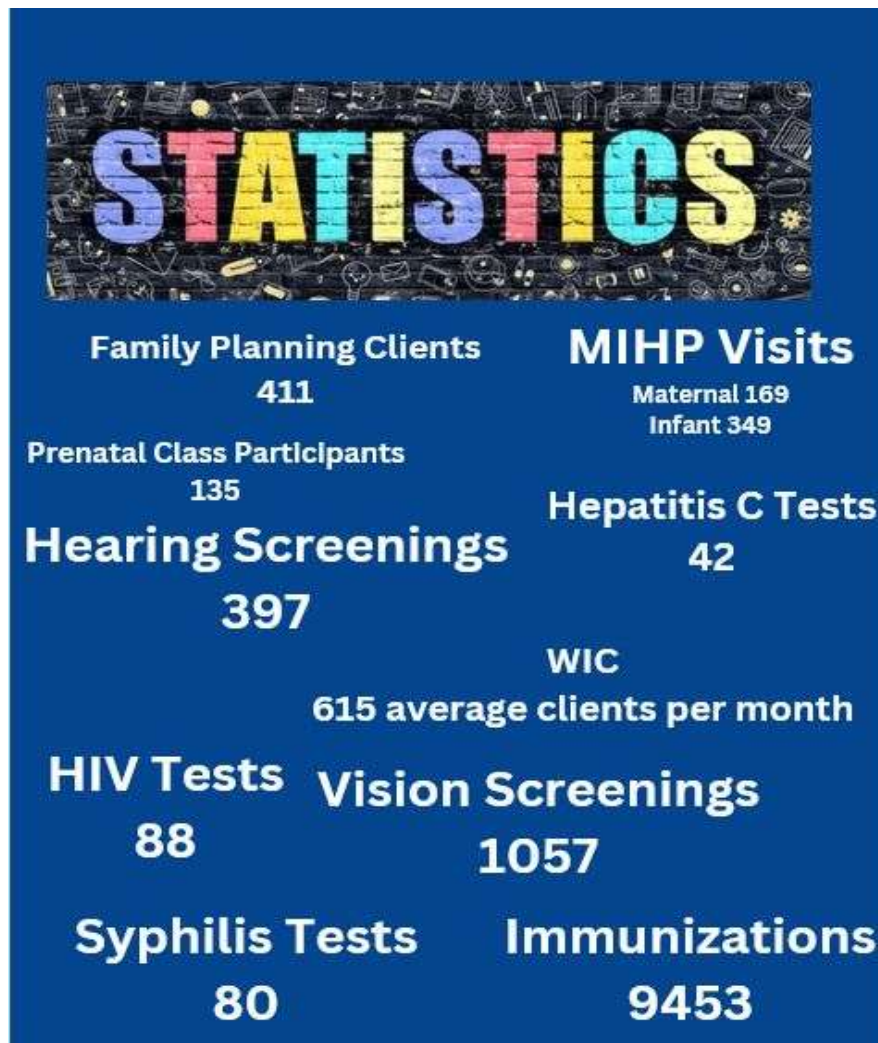
# Home Health and Hospice

EUP Home Health & Hospice is a service of the Chippewa County Health Department. This department is accredited by CHAP (Community Health Accreditation Program) to ensure that home health and hospice services meet the highest standards. We are also Medicare certified, following CMS (Centers for Medicare and Medicaid Services) guidelines. Chippewa County residents are able to receive quality and caring home health services in their home, including nurse aide visits, skilled nursing visits, physical therapy, occupational therapy and speech therapy. A social worker is also available to provide support to families.



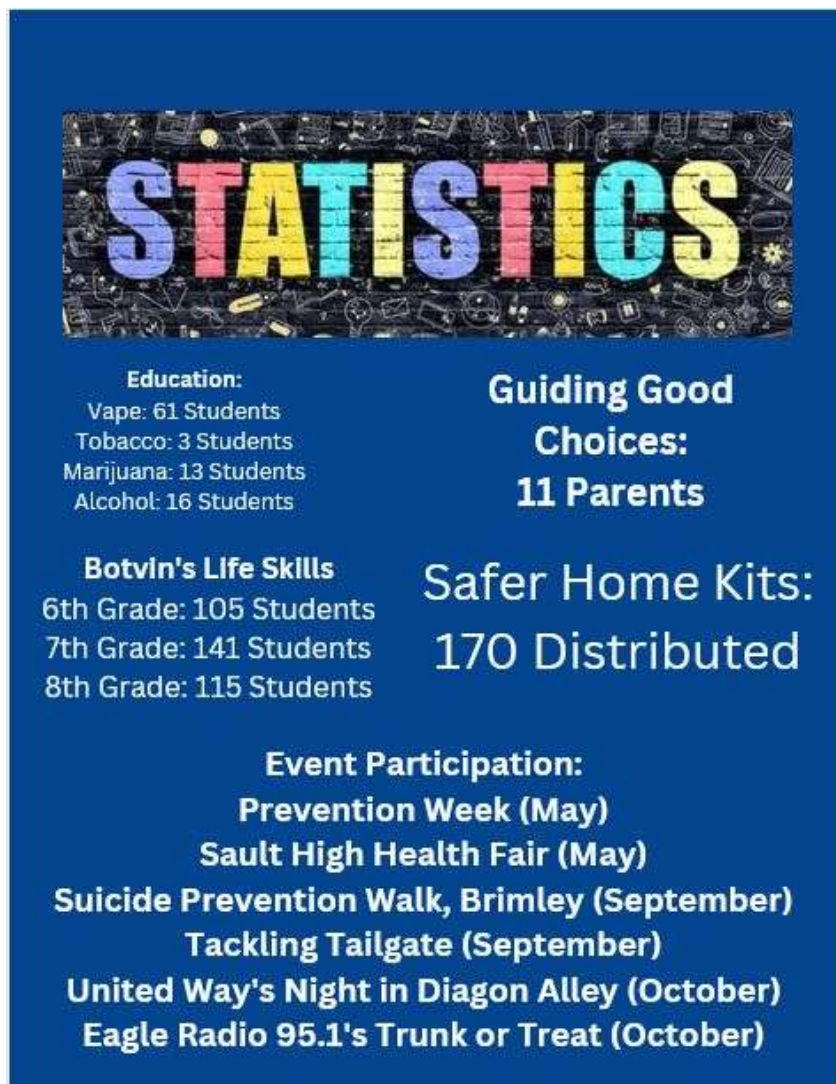
# Personal and Family Health

The personal and family health division delivers a variety of services, covering all ages of community members, even before birth. Through this department prenatal classes are offered, as well as MIHP (Maternal/Infant Health Program) and WIC (Women, Infants, and Children.) Women can receive breast feeding support from a peer counselor or an International Board-Certified Lactation Consultant (IBCLC). CCHD encourages clients to take care of their health by receiving appropriate care, from immunizations and TB testing to services offered within the Sexual Health Clinic. Sexual Health clinic services include physicals, many birth control options, testing for STIs, Hepatitis C and HIV. CCHD also offers PrEP (prophylactic treatment for HIV) and treatment for Hepatitis C. Additional programs offered through Personal and Family health include immunizations, Children's Special Health Care, Breast and Cervical Cancer Navigation Program, Vision and Hearing Screenings, Fluoride Varnish and Car Seat installation.



# Substance Use Disorder Prevention

Prevention is an important program at the health department. It allows for staff to connect with younger members of our community in the hope that it will give them the tools they need to create a healthy lifestyle. Health educators use evidence-based programming to teach numerous classes, including Guiding Good Choices, Prime for Life and Botvins Life Skills. CCHD Prevention staff have formed partnerships with local schools and court systems so that education can be provided to youth that violate school policy and/or local laws in regards to substance use. Prevention staff also distribute “Safer Home Kits” which include a medication lock box, a Detera Drug Deactivation Bag and Naloxone.



# Community Programs

## **Harm Reduction:**

Harm reduction services were implemented in 2018 in an effort to decrease rates of Hepatitis C within Chippewa County. Services offered through this program include Safe X-Change, a mobile syringe access service program, testing for Hepatitis C and HIV, Naloxone distribution, referrals for treatment and support and immunizations. In 2022 the number of syringes collected through the program was 15,500; 10 referrals to treatment were made; 7 referrals for HIV/Hep C testing were made; 380 Narcan kits were distributed and 8 overdose reversals were reported.

## **UP MOMS:**

The Upper Peninsula Maternal Opioid Misuse (UP MOM) program was implemented in 2021 in an effort to provide support to women experiencing opioid disorders. Community Health Workers support the needs of the whole person allowing women to focus on a healthy pregnancy and well-being after birth for both mom and infant. This program supports women who are pregnant and up to 12 months postpartum and who have had a history of, or are currently experiencing, opioid use disorder (OUD).

## **Kindergarten Oral Health Screenings:**

Public Act 261 was enacted in 2020 in an effort to ensure that children entering kindergarten or first grade have a dental oral health assessment prior to enrollment. Through a Dental Hygienist and PA 161 program, more than 350 children residing in Chippewa County were screened prior to enrollment in 2022.



# School-Based Health

The Sault Health Adolescent Care Center (SHACC) is a valuable resource for many students within Chippewa County. Located inside Sault High School, it is readily accessible for high school and middle school students. Services range from assistance with management of long-term conditions to minor illnesses and injuries, counseling services, comprehensive physicals, as well as baseline concussion testing in the event an injury occurs during the season. The SHACC operates year-round and is staffed with a Certified Family Nurse Practitioner, seasoned clerical and outreach staff and behavioral health staff. In addition, Health Educators provide classroom and after school health education opportunities for students and lead youth activity councils.



## **Chippewa County Health Department Communicable Disease Report 2018-2022**

The Communicable Disease staff at Chippewa County Health Department works daily to monitor and follow up on any reportable diseases throughout Chippewa County. The main purpose of communicable disease surveillance is to identify potential threats to public health due to communicable disease, identify outbreaks quickly, and provide prevention and control guidance. Throughout 2022, there has been a fluctuation in the number of cases of several reportable diseases.

The Communicable Disease staff works jointly with Environmental Health to investigate any foodborne cases reported. Cases of note include a decrease of salmonellosis cases, five (5) cases were reported in 2022 compared to nine (9) cases reported in 2021.

Sexually transmitted diseases (STDs) cases in Chippewa County have varied in 2022. There were nine (9) cases of gonorrhea reported in 2022, compared to 12 cases reported in 2021. Eighty (80) chlamydia cases were reported in 2022, as well as 80 cases reported in 2021. Of note, syphilis cases in 2022 increased to four (4) cases from one (1) case. Additionally, HIV/AIDS increased to one (1) case in 2022, from zero (0) cases in 2021.

Chippewa County continues to see an increase in chronic hepatitis C cases, with a total of 36 cases reported in 2022 as compared to 17 cases in 2021. Part of this increase may be accounted for by increased testing. In 2020, the CDC recommended all adults over the age of 18 be screened at least once in their lifetime for hepatitis C.

In response to the continued rise in hepatitis C cases Chippewa County Health Department continues to have a syringe access program and offer free hepatitis C testing. Additionally, Dr. Catherine Wilkerson Public Health Medical Director, has started treating hepatitis C patients at Chippewa County Health Department.

# Communicable Disease

Disease Group	Disease	2018	2019	2020	2021	2022
AIDS/HIV	HIV/AIDS, Adult	0	0	0	0	1
Foodborne	Campylobacter	1	1	6	6	6
	Cryptosporidiosis	2	6	1	1	0
	Giardiasis	3	2	3	2	4
	Salmonellosis	10	9	5	9	5
	Shiga toxin-producing E.Coli (STEC)	2	1	2	0	1
	Novel Coronavirus Covid-19	0	0	1973	4241	5285
Influenza	Influenza	8	7	16	29	566
Meningitis	Meningitis- Aseptic	0	1	0	1	0
	Meningitis- Bacterial Other	0	0	0	1	0
	Meningococcal Disease	0	0	0	0	0
Other	CP-CRE	0	0	1	0	1
	CP-CRE (pre-2020)	0	0	0	0	0
	Guillain-Barre Syndrome	0	0	0	0	0
	Legionellosis	4	2	2	2	1
STD	Chlamydia (genital)	86	60	68	80	80
	Gonorrhea	5	5	7	12	9
	Syphilis -Congenital	0	1	0	0	0
	Syphilis -Early Latent	4	3	1	0	3
	Syphilis -Late Latent	0	0	0	0	0
	Syphilis -Primary	1	2	0	0	0
	Syphilis -Secondary	1	2	1	1	1
Vaccine Preventable Diseases	Chickenpox	0	0	1	0	0
	H. influenzae Disease -Inv.	0	0	0	0	0
	Measles	0	0	0	0	0
	Mumps	0	0	0	0	0
	Pertussis	1	2	0	0	0
	Polio	0	0	0	0	0
	Rubella	0	0	0	0	0
Vectorborne	Lyme Disease	1	1	0	0	0
	Malaria	0	0	0	0	0
	West Nile Virus	0	0	0	0	0
Viral Hepatitis	Hepatitis A	0	0	0	0	0
	Hepatitis B, Acute	0	0	0	0	0
	Hepatitis B, Chronic	0	1	0	0	0
	Hepatitis C, Acute	2	1	0	0	2
	Hepatitis C, Chronic	14	15	16	17	36
	Hepatitis C, Perinatal	0	0	0	0	0

# Financials

